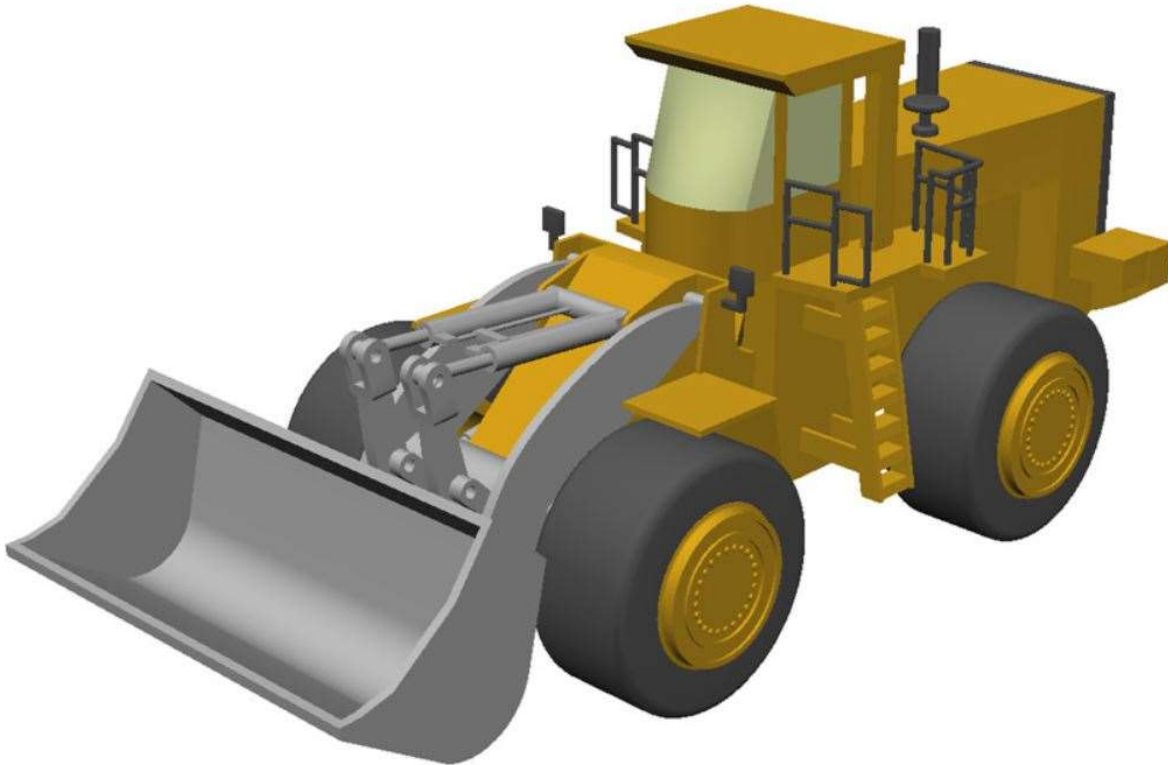




# **TS350 FRONT END LOADER DATA CAPTURE SOFTWARE INSTALLATION & USER MANUAL**



**THE COMPLETE TS350 SYSTEM HAS BEEN INSTALLED AND THE FOLLOWING  
MANUAL WILL AID IN THE INSTALLATION & SETUP PROCESS FOR THE  
LOGGING OF DATA**

# Contents

---

DATA LOGGER SOFTWARE SETUP FOR PC.....3

BASICS OF THE PC LOGGING SOFTWARE.....4

UNIT REGISTER.....6

DOWNLOADING LOGGED FILES.....8

DATABASE VIEWER.....9

CLEARING DATABASE..... 12

LOADING DATABASE..... 13

## DATA LOGGER SOFTWARE SETUP FOR PC

All the data stored on the USB flash drive can be downloaded and stored on to a Windows based PC.

The software application setup can be downloaded from the website:

### Safe-Aid TS350 Front End Loader Data Logger Setup

@ <http://www.cranesafety.co.za/Downloads/software%20downloads.html>

Full software support is available for the following operating systems:

- Windows 10

Once the application has started correctly a **Welcome** screen will appear (**Figure 1**), click **Next** to continue to the **Installation Folder** screen (**Figure 2**). The application will automatically create a folder **Elec-Mech\ccFrontEndLogUSB** or select **Change** to select a different folder. 9.0MB of space is required for installation and the available space is shown, make sure there is enough space before continuing.

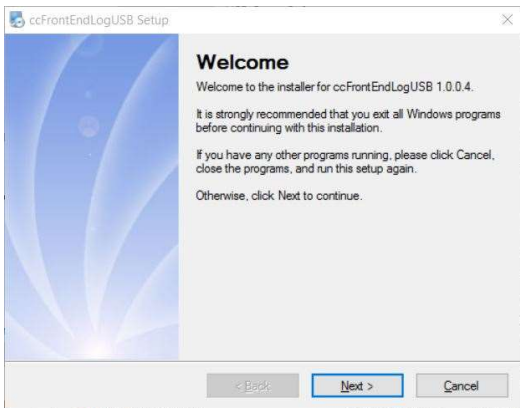


Figure 1

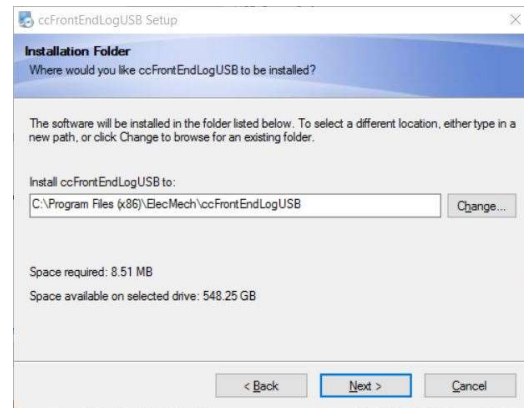


Figure 2

Click **Next** to continue to the **Shortcut Folder** screen (**Figure 3**). The shortcut will be placed on the desktop and can be made available for the current user or all users; this is selectable on this screen using one of the two options provided.

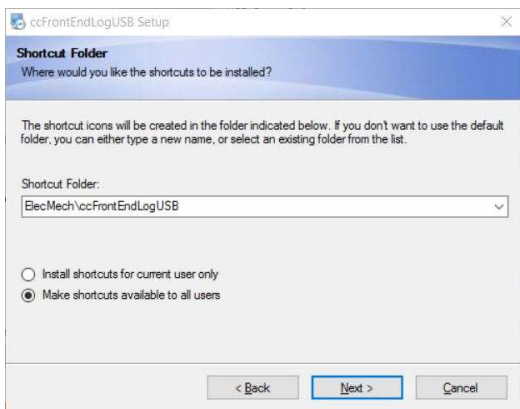


Figure 3

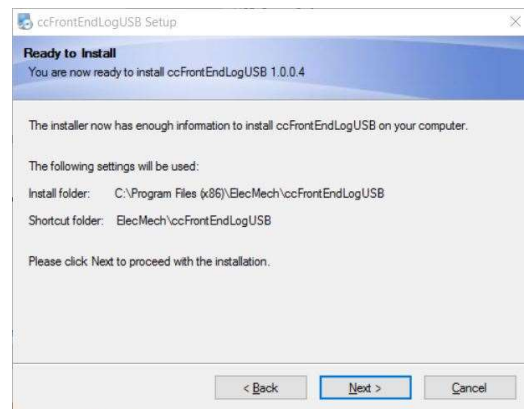


Figure 4

Before the installation starts all the selected information is displayed again on the **Ready to Install** screen (**Figure 4**). Confirm all the selections made are correct and click **Next** to continue.

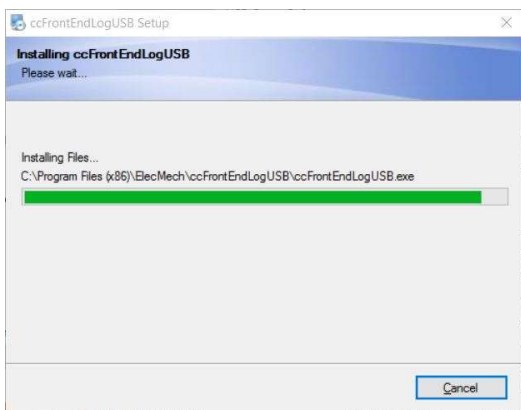


Figure 5

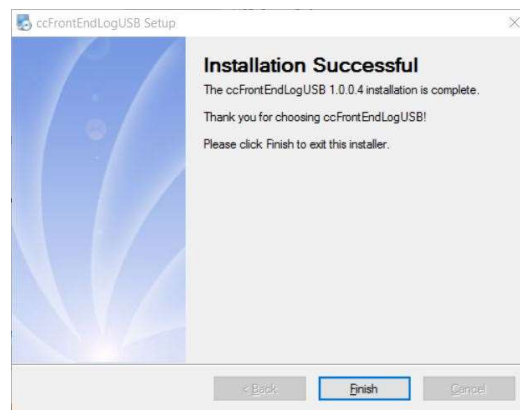


Figure 6

The application will now install and a progress bar will be displayed (**Figure 5**), once complete the Installation screen will be displayed (**Figure 6**). Click **Finish** to complete installation and exit the Forklift Logger Setup installation.

Once the **ccFrontEndLogUSB** program is installed open the program on the PC using the shortcut on the desktop, remove the USB flash drive from the TS350 display unit and insert the USB flash drive into the PC.

Any software queries contact your authorized distributor or email the factory at:

- [info@ranesafety.co.za](mailto:info@ranesafety.co.za)

## BASICS OF THE PC LOGGING SOFTWARE

All the data stored on the USB flash drive can be downloaded and stored directly from the USB flash drive onto the PC using the ccFrontEndLogUSB software.

The following functions can be done or viewed with the ccFrontEndLogUSB application:

- Backup DataFile on Read - Download & backup data from USB flash drive
- Delete DataFile on Read - Download & delete data from USB flash drive
- Unit Register- Create a register with TS350 display serial number and a machine identification or serial number therefore allowing multiple machines data to be stored in one place
- Delete event data from data base (date selection)
- Number of logged data entries – Viewed on the screen
- Printing of reports by data entry date – user selectable with a start date and an end date.

Open the ccFrontEndLogUSB shortcut on the PC desktop (Figure 7).

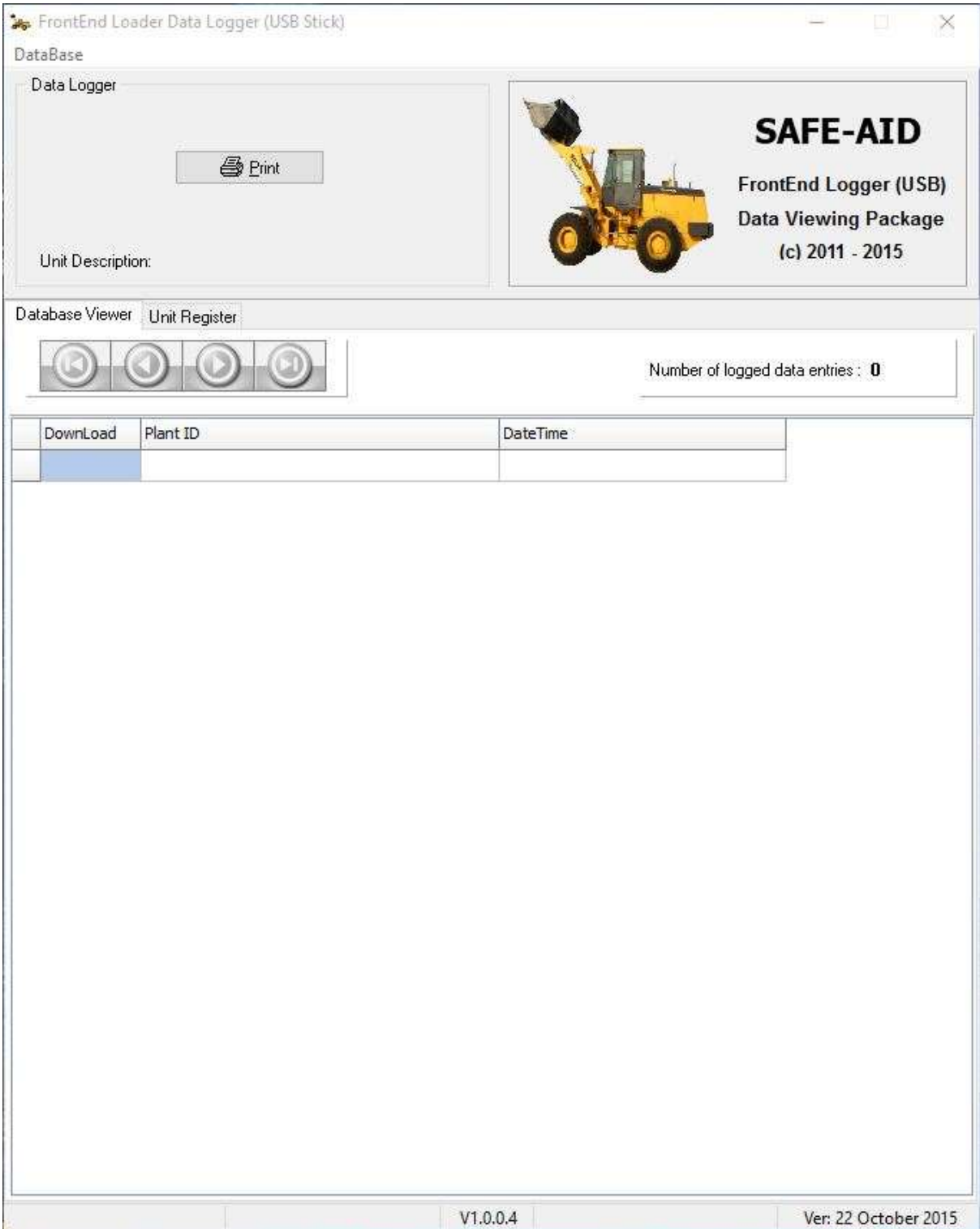



Figure 7

## UNIT REGISTER

Each TS350 display unit is appointed a serial number at the factory i.e. the serial number cannot be changed. This is used to identify all the displays in the logging software and therefore can be given a customised description linking the display to the relevant machine. Once a list of TS350 display units and machines has been compiled add them to the logging software as follows:

- Click on the **Unit Register** tab
- Click the  button, the Serial Number Entry window will be displayed (**Figure 8**)

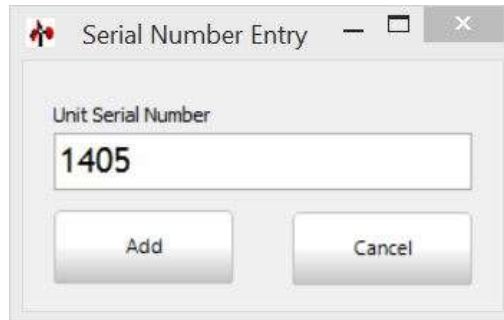




Figure 8

- Enter the TS350 display serial number and click **Add**.
- Click on the Unit Description box (**Figure 9**)



Figure 9

- Type into the **Unit Description** box a customised description of the machine that the TS350 is installed into i.e. this description can be the machine make/model, serial number, fleet number or a combination.
- Click on the  button once the description is complete to save. The description can be edited at any time by clicking on the description editing the text and repeating the save.
- Repeat the above steps to add all the TS350 display units with their relevant descriptions.
- To delete a unit, highlight the unit to be deleted then click on the  button and the Confirm Delete window will be displayed (**Figure 10**). Click **OK** to confirm deletion or **Cancel** to keep the record.

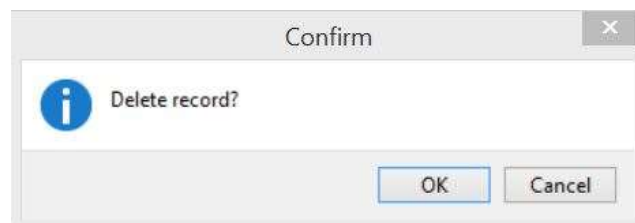


Figure 10

- Once completed the PC should have a list of all the TS350 serial numbers and their relevant descriptions (**Figure 11**).

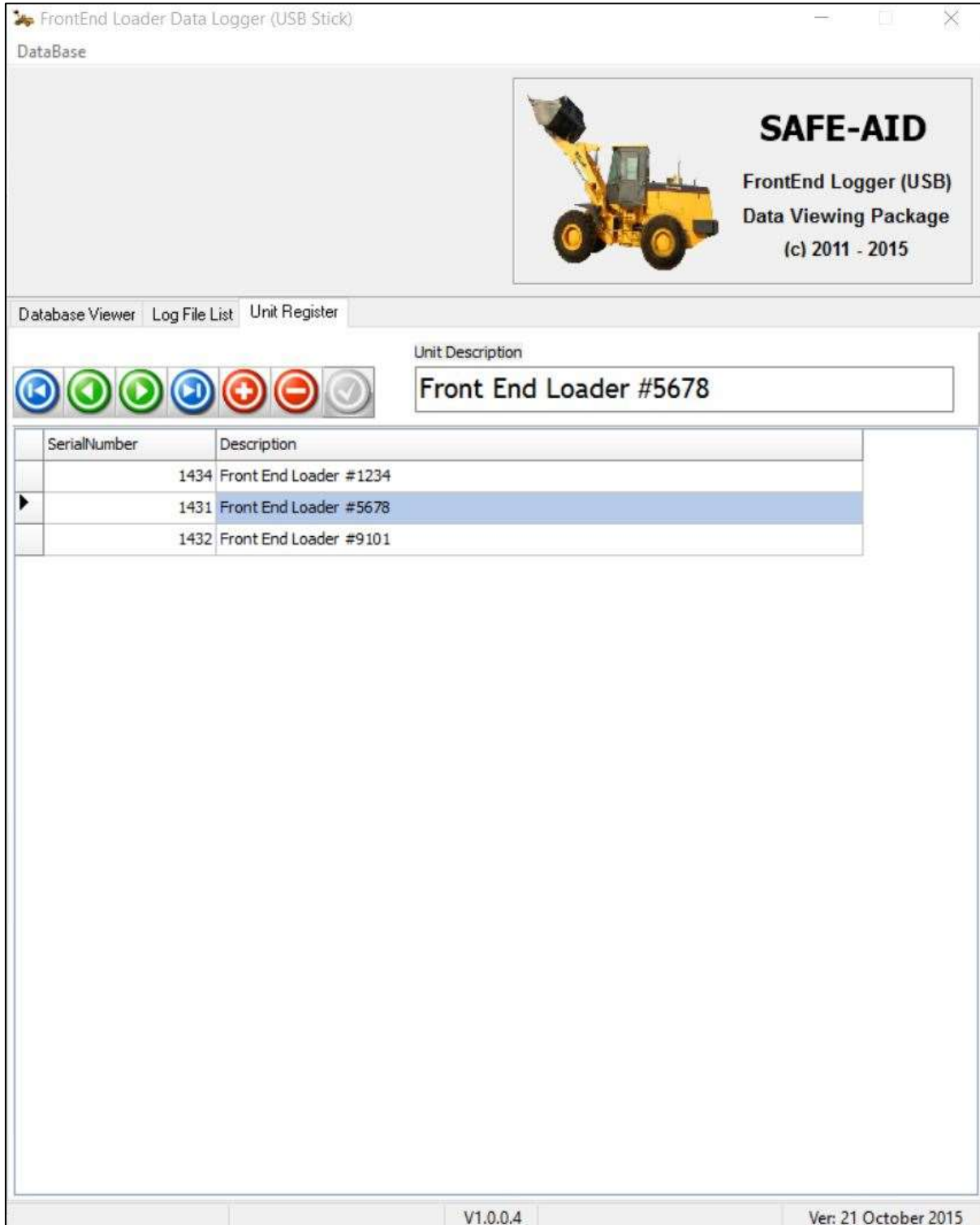


Figure 11

## DOWNLOADING LOGGED FILES

The logged data from the TS350 display unit is transferred from the USB flash drive to the PC manually to allow the data to be managed. The following process will run through the download of the files from the USB flash drive:

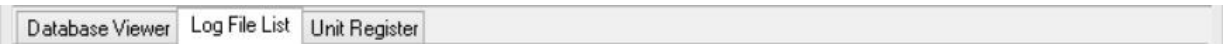


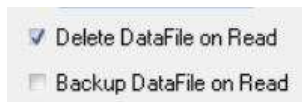
Figure 12


- Once the USB flash drive has been inserted the **Log File List** tab will be displayed between the Database Viewer and the Unit Register tabs (**Figure 12**)
- Click on the Log File List tab to show the file path on the left as well as the log files (**.FES**) on the USB flash drive on the right of the screen (**Figure 13**).
- The log files are generated daily by the TS350 and the file is structures as follows:
  - FE – first 2 letters are for Front End Loader
  - \_SN1431 – TS350 display unit serial number



Figure 13

- Select the log file(s) that need to read into the data base by selecting the Check box(s) next to the file(s) name(s).
- There are 2 methods of reading the data files into the data base:
  - **Delete DataFile on Read** – this saves the data into the data base and deletes the file from the USB flash drive
  - **Backup DataFile on Read** – this saves the data into the data base creates a backup file in My Documents and deletes the file from the USB flash drive



- Click the  Backup DataFile on Read tick box to select the required method
- Select  button
- The data will be deleted from the flash drive and loaded into the data base.



## DATABASE VIEWER

Once the data has been read into the data base Click on the **Database Viewer** tab (Figure 14) the data can be viewed and/or printed as required by following the procedure.

FrontEnd Loader Data Logger (USB Stick)

DataBase

Data Logger

Print

Unit Description: Front End Loader #5678

**SAFE-AID**  
FrontEnd Logger (USB)  
Data Viewing Package  
(c) 2011 - 2015

Database Viewer | Log File List | Unit Register

Number of logged data entries: 7

Download	Plant ID	DateTime
7	1431	22/10/2015 06:52:46

V1.0.0.4 | Ver: 21 October 2015

Figure 14

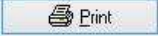

- All downloads will be shown, as follows:
  - **Download** - download number which is added incrementally for each download completed and cannot be reset
  - **Plant ID** – the identity of the equipment the TS350 is installed into
  - **DateTime** - is the date and time that the download was done and not when the file was created on the USB flash drive
- Click on the relevant heading to reorder (sort) the downloaded files from low to high and vice versa.
- Select the  button (**Figure 15**) and then select the options as laid out below:
  - Report Date Range
    - **From date to date** – select a **from** date and a **to** date, this will reduce the print data
    - **No date** (All events) – all events in the data base will be selected
  - Report Grouping
    - **By Equipment Number** – only the selected equipment number will be displayed
    - **All Equipment** – all equipment in the data base will be selected

Figure 15

- Once date range and equipment type has been selected press the  button and the requested report will be generated (**Figure 16**).


FrontEnd Loader Log Report			
Tel: 011-792-1084   Fax: 011-793-7004   cranesafety@icon.co.za			
Loader Number : 1431		Loader Description : Front End Loader #5678	
			
Date / Time	Buckets	Weights	ID's
<b>Strt:</b> 23 Oct 2015 06:56:am	4	<b>Target</b> 20.00t	<b>Product</b> SAND SASOL
<b>End:</b> 23 Oct 2015 06:56:am		<b>Total</b> 9.80t	<b>Truck</b> ZVL147GP
<b>Strt:</b> 23 Oct 2015 06:56:am	8	<b>Target</b> 10.00t	<b>Product</b> SAND SASOL
<b>End:</b> 23 Oct 2015 06:56:am		<b>Total</b> 19.60t	<b>Truck</b> ZVL147GP
<b>Strt:</b> 23 Oct 2015 07:01:am	0	<b>Target</b> 30.00t	<b>Product</b> SAND SASOL
<b>End:</b> 23 Oct 2015 07:01:am		<b>Total</b> 0.00t	<b>Truck</b> ZVL147GP
<b>Strt:</b> 23 Oct 2015 07:02:am	0	<b>Target</b> 10.00t	<b>Product</b> T
<b>End:</b> 23 Oct 2015 07:02:am		<b>Total</b> 0.00t	<b>Truck</b> ZVL147GP
<b>Strt:</b> 23 Oct 2015 07:02:am	4	<b>Target</b> 10.00t	<b>Product</b> STONES
<b>End:</b> 23 Oct 2015 07:02:am		<b>Total</b> 9.76t	<b>Truck</b> ZVL147GP
<b>Strt:</b> 23 Oct 2015 07:02:am	8	<b>Target</b> 10.00t	<b>Product</b> STONES
<b>End:</b> 23 Oct 2015 07:03:am		<b>Total</b> 19.44t	<b>Truck</b> ZVL147GP
<b>Strt:</b> 23 Oct 2015 07:03:am	12	<b>Target</b> 20.00t	<b>Product</b> STONES
<b>End:</b> 23 Oct 2015 07:03:am		<b>Total</b> 29.16t	<b>Truck</b> ZVL147GP

Figure 16


The event report shows the following data:

- **Serial Number** – TS350 display unit's unique serial number
- **Unit Description** – Description created by user in Unit Register
- **Strt Date / Time** – Date and time batch was Started
- **End Date / Time** – Date & time that batch was Stopped
- **Buckets** – No of buckets to reach Total Weight
- **Target Weight** – Target Weight required
- **Total Weight** – Total Weight loaded
- **Customer / Product** – Product or Customer ID - recorded on batch start-up
- **Truck** – Registration or ID of Truck – recorded on batch start-up

All the event data is in date and serial number order.

## CLEARING DATABASE

Events can be deleted by date range using the following procedure:

- Click on  in the top left hand corner.
- Click on **Clear Old Records**
- Select the data range to be deleted (**Figure 17**)

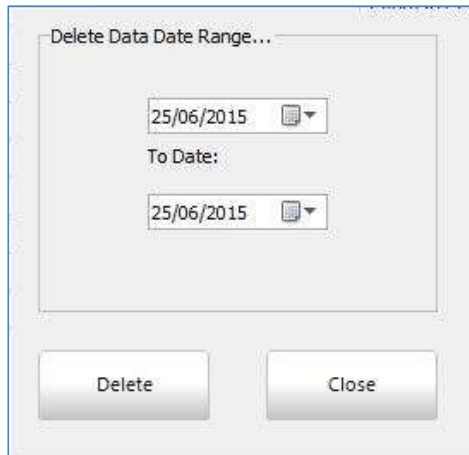


Figure 17

- Once the dates have been selected click the  button.

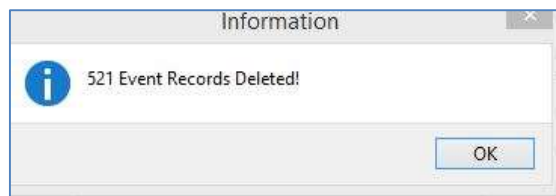


Figure 18

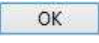
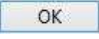

- The total number of events deleted will be displayed (**Figure 18**)
- Click the  button
- If all the events from a download are deleted the complete download will be deleted from the database (**Figure 19**)



Figure 19

- Click the  button
- Once complete click the  button.

## LOADING DATABASE

Databases can be moved from PC to PC and loaded using the following procedure:

- Click on **DataBase** in the top left-hand corner.
- Click on **Load Database File**
- Select the location of the new data base (**Figure 20**)

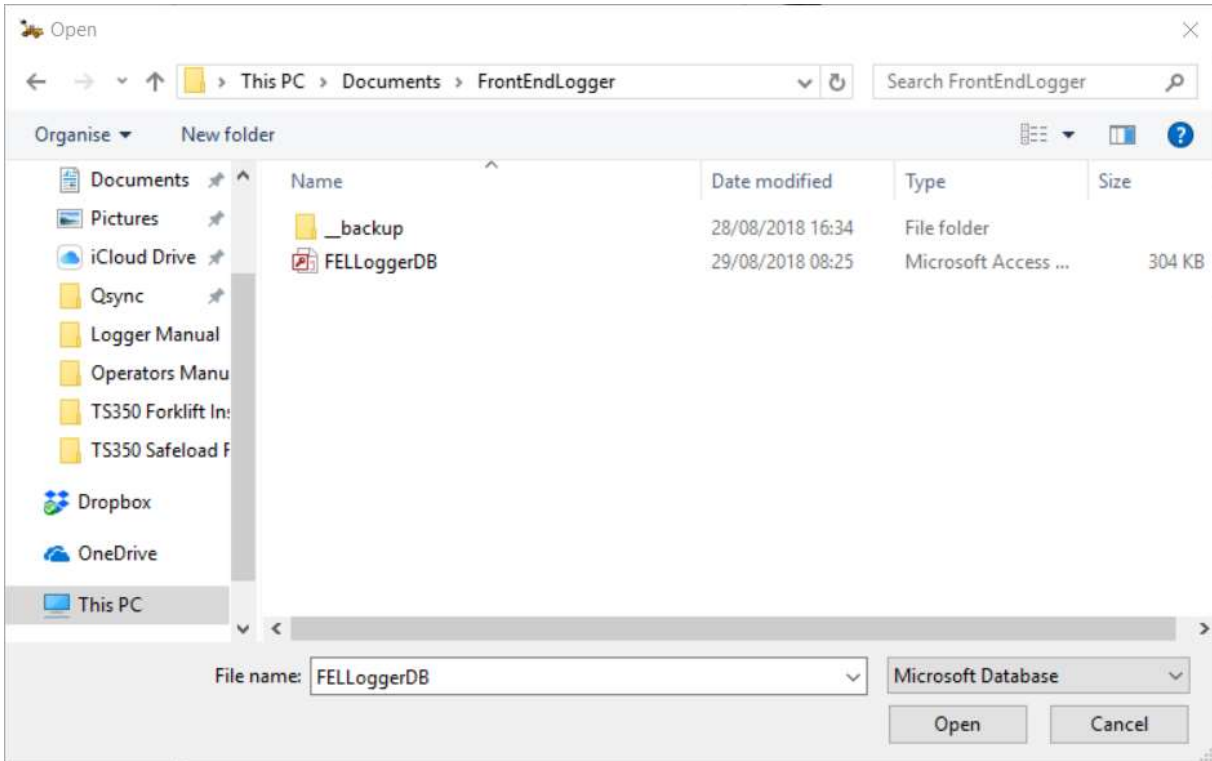


Figure 20

- Select the required database file \*.mdb
- Click the **Open** button to use the selected data base